

CCTV Hindhead



Background:

Request of CCTV coverage to the London Road Hindhead due to anti social behavior. There are currently approximately 200 people living on this road and there is every possibility will possibly increase by 100. The Punch Bowl Hotel is also at the end of the road along with national trust carpark. Sleeptight do advise on the one camera with 4 lenses at the double roundabout. This enables all arterial routes covered with number plate recognition. They also said due to development of new houses if a camera is required should be added after completion of houses. They also made a point that covering national trust land could open us up to be inundated for requests. They also advised that maybe Barons or Hotel have their own CCTV at that end. Provisions can be added to set up of the one camera casing to add another camera at a later date.

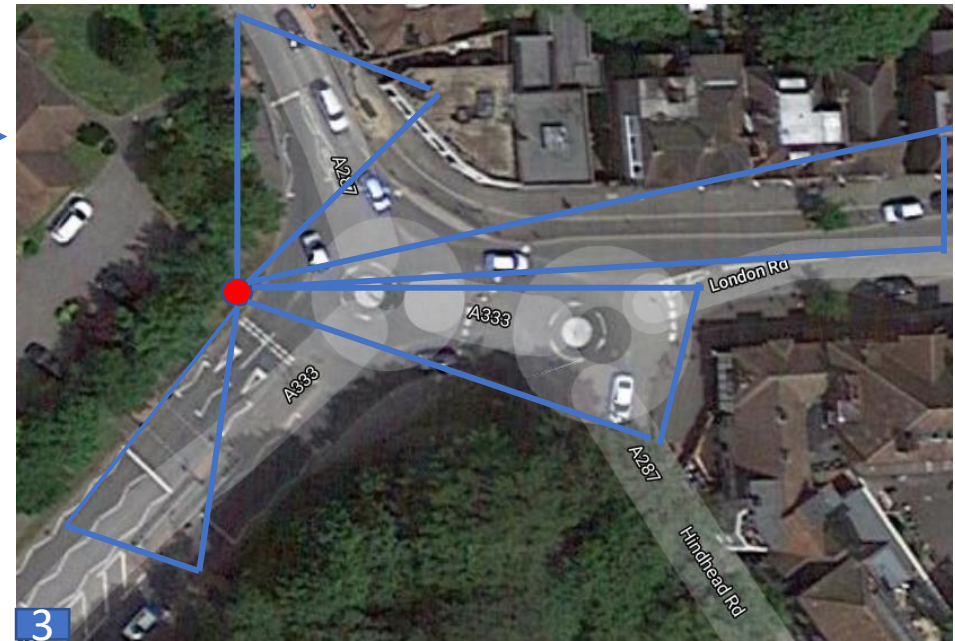


Description	Quantity	Rate	Amount
To supply and install Cctv for Hindhead	1	£3,483.00	£3,483.00
1 x EXIR FLEXIBLE PANOVU CAMERA			
1 x WALL MOUNT BRACKET FOR USE WITH POLE ADAPTOR FOR CAMERAS			
1 x ARC-90-60-32/A4P - Roadside Cabinet 900mm H x 600mm W x 320mm D Powder Coated Black or Hollybush Green as standard			
1 x c/w Altrion 4 point locking CAB-TAB TEMPLATE & BOLT KIT FOR CABINET			
1 x Filter cartridge pair			
Works for concrete base installation			
Labour, cable and sundries			
The following is required and is not included in the quotation			
Sim for 4G recorder			
Electrical works for CCTV equipment			
Parts Subtotal			£3,483.00

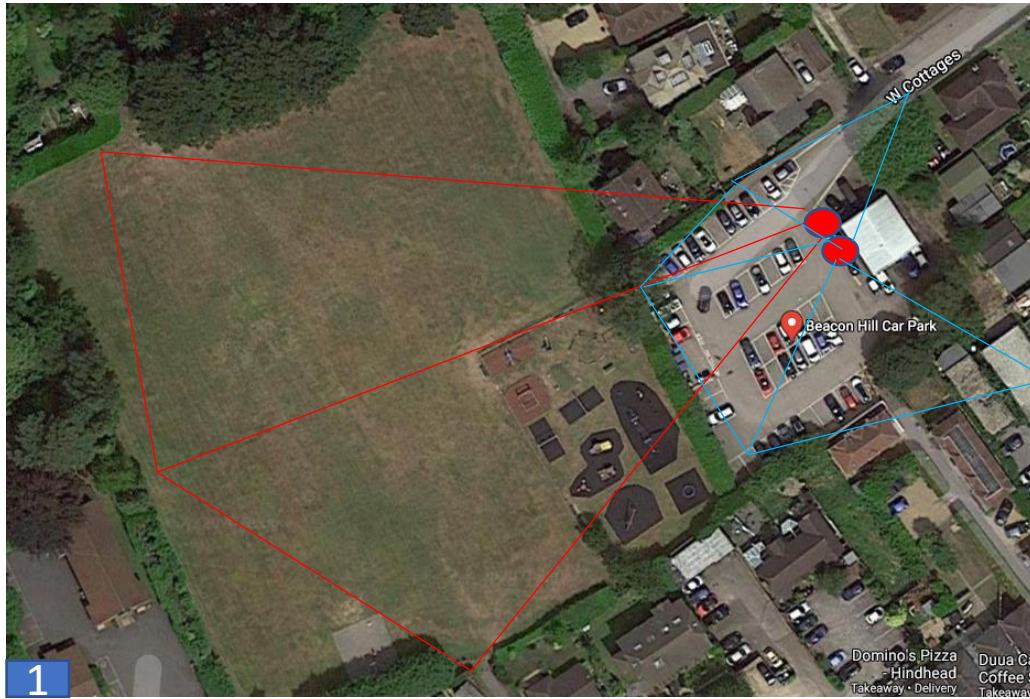
Coverage:

1 x controlled camera casing with 4 x camera lenses independently designated to different roads, covering all in and out on double roundabout, will have number plate recognition.

1 x Secure recording cabinet, 4G enabled – remote access from town hall
Second camera location if required at later date shown in picture 4.



CCTV Beacon Hill



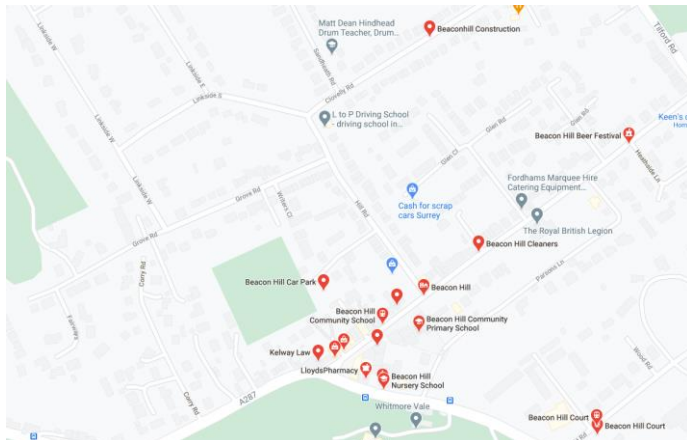
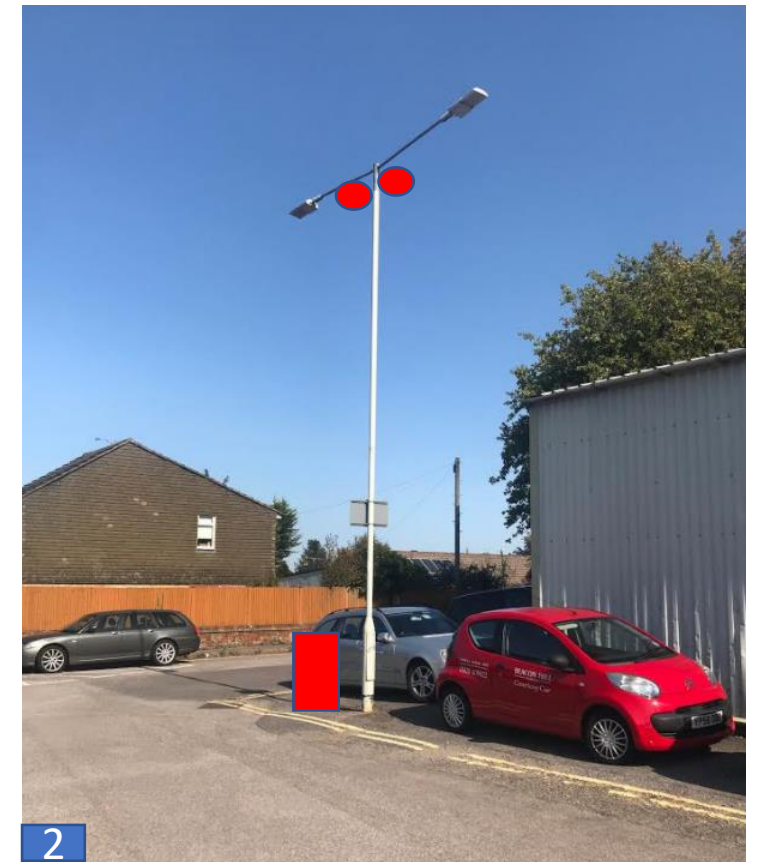
Coverage:

1 x 4k 80mm high Definition lenses shown in Red as shown, covering Rec area.

There is a blind spot from hedge row.

1 x Motion controlled camera, covering carpark area, will be able to track all number plates in and out. Also can look up foot path.

1 x Secure recording cabinet



Background:

At request of anti social behaviour in Rec/carpark area, along with vandalism and Arson.

Please note CCTV recommendations are from Sleptight security and locations shown.

Primary cameras in carpark. We can ask for second location of 3RD camera on Hill road (Provisions can be put in place to add at later date). We are awaiting confirmation that lamp post is owned by Waverley and who owns the land for cabinet to be installed. Also power supply and licences required for both cabinet and CCTV.



Third camera position if required, provisions can be added to add at a later date



Description	Quantity	Rate	Amount
To Supply and install CCTV For Beacon Hill	1	£5,821.00	£5,821.00
1 x EXIR FLEXIBLE PANOVU CAMERA WALL MOUNT BRACKET			
1 x HIKVISION POLE ADAPTOR FOR CAMERAS			
1 x 4-LINE BULLET CAM, 4.7-94MM, H265+			
1x INTAKE BOX FOR VARIOUS BULLET CAMERAS POLE MOUNT ADAPTOR, STAINELSS STEEL			
1 x Roadside Cabinet 900mm H x 600mm W x 320mm D Powder Coated Black or Hollybush Green as standard			
1 x c/w Altron 4 point locking CAB-TAB TEMPLATE & BOLT KIT FOR CABINET Filter cartridge pair			
Works for concrete base installation			
Labour, cable and sundries			
The following is required and is not included in the quotation Sim for 4G recorder Electrical works for CCTV equipment			
		Parts Subtotal	£5,821.00



CCTV Weyhill – Extra camera Lion Green



2 x motorised bullet camera with Darkfighter night vision.



1 x Secure cabinet for recording

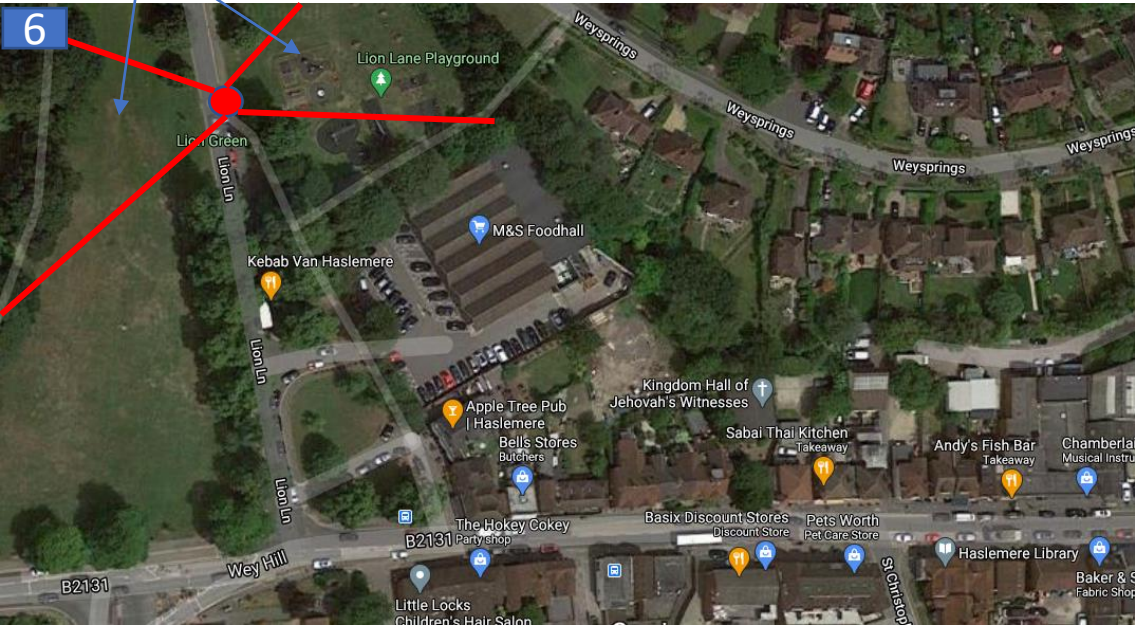


Approved - CCTV location and Recording cabinet location- Installation for October 2020

Additional request for 1 x 4K camera in Lion green

Background:
There has been reported an increase in anti social behaviour in the Lion green area. The request for the 3rd camera to cover Lion green to work with already approved cameras in Weyhill. I have already been in contact with SleepTight Security who are installing the 2 cameras in October to put provisions in place for a 3rd camera. This does make it easier for installation of 3rd camera if so approved. They will put a receiver in place – which requires line of site telemetry. All the future cameras will be 4G enabled and have requested that all current and future works can be accessed by the Town Hall. There is also possibility that due to coverage of the complete park area that Town Hall could be inundated for requests.

Camera position as shown, on a moving continuous and motion following mode, possibly 2. Note not confirmed as Lamp Post is not as high as others on Weyhill and there is a lot of foliage coverage. We would need to confirm exact location. Have shown arcs of what is covered.



Description	Quantity	Rate	Amount
1 x pair of transceivers 5K	1	£2,126.00	£2,126.00
1 x 8k bullet dark fighter			
Power supply			
Pole bracket			
IP Rated enclosure			
Electrical works			